

**OMR-2000**

# OMR-2000

- Reads 140 cards per minute
  - Built-in automatic feeder
    - Choice of output data formats
      - Auto or software controlled feed

*Chatsworth Data Corp. has been developing and manufacturing optical mark readers since 1971.*

*The company currently supplies markets as diverse as education, industry, government, beverage, lottery, survey, vote tabulation, securities trading, dating services, and many more.*

*Business and commercial opportunities continue to grow for inventory control, labor distribution, time management, job and employee status, field service reports, scheduling, human resources, call reports, and quality control.*

*Chatsworth Data OMR's are utilized in the healthcare industry for health risk profiles, lab reports, patient visits, nurse staffing, physician orders and cardiac risk assessments.*

*One reason Chatsworth Data OMR's are selected so often is their size. They are small and compact. Still many of the advanced design features associated with higher priced units are included as part of the Chatsworth Data low cost readers.*

*The well proven designs assure you of the utmost in performance, reliability, and accuracy.*

The Model OMR-2000 Optical Mark Reader is a compact, automatic-feed OMR for reading data from one side of a standard .007 inch thick card at a time. Data marks are then converted by the OMR into an ASCII format and sent to a computer via RS-232C serial communications for further processing.

Card feed is selectable. Using the continuous operation, cards are fed non-stop at rates up to 140 forms per minute. The demand feed operation permits the software to control card feed timing through the application program.

The Model OMR-2000 features three standard output data formats: ASCII-converts Hollerith punches or marks to ASCII character equivalents; Card Image (binary)-converts combinations of marks or punches to ASCII decimal equivalents; and Download mode of operation enables the operator to customize the interpretation of the card format. Nine single character download formatting commands are available.

The input hopper has a card stacking capacity of 150 forms. Forms are stacked in the output tray in the same sequence as they were read from the input hopper. A floating deck eliminates card transport flutter problems and facilitates the handling of damaged form.

The Model OMR-1102 is available in two styles. The "Infra Red" unit will read standard #2 pencil, punched and pre-printed marks, and allows colored background printing. The "Visible Red" unit will read black or blue marks made with a ballpoint pen or feltip pen as well as pencil, punched and pre-printed marks. However, the background printing must be in the visible red range.

The Remark Classic OMR test scoring and survey software supports the OMR-2000

## Sales Office

**Telephone**

(612) 442-5530

(888) 247-1201

**Fax:**

(612) 442-4005

**Email:**

[cdc@omrsys.com](mailto:cdc@omrsys.com)

## Corporate Office

**Telephone**

(818) 941-9200

(800) 423-5217

**Fax:**

(818) 341-3002

**Email:**

[cdcsales@chatsworthdata.com](mailto:cdcsales@chatsworthdata.com)

### Specifications

**Scan Area:**

Reads up to 12 rows at .25 inch centers x 128 mark positions on a 3-1/4 inch x 11 inch (82.55 x 279mm) forms.

**Interface/Baud Rate:**

RS-232c asynchronous (PC Serial) 110-9600 Baud

**Form Marking (Infrared Option):**

#2 Pencil  
Key punched slots  
Pre-printed marks

**Form Marking (Visible Red Option):**

#2 Pencil  
Blue or black ball point pen  
Blue or black felt-tip pen

**Scanning Speed:**

140 cards per minute

**Read Technique:**

Graded Index fiber, single sided, manual feed

**Form Size:**

3-1/4" x 5" to 3-1/4" x 14"  
82.5 x 127 mm to 82.5 x 355.6mm  
8.2cccm x 12.7cm to 8.255cm x 35.6cm

**Data Output:**

Binary ASCII Values  
ASCII Character (Hollerith Coding)  
Download mask

**Feed Method:**

Automatic feed or on demand 150 card hopper with powered transport

**Power:**

114-125 VAC, 60 Hz dual lead power adapter  
220 VAC, 50 Hz available

**Microprocessor:**

8085

**Dimensions:**

7 inches wide x 7 inches high x 12.9 inches long  
177 x 177 x 327cm

**Row Enable:**

User defined enable/disable any or all 12 data channels

**Operating Conditions:**

41<sup>0</sup> to 113<sup>0</sup>F (5<sup>0</sup> to 45<sup>0</sup> C)  
30% to 80% humidity, non-condensing

**Weight:**

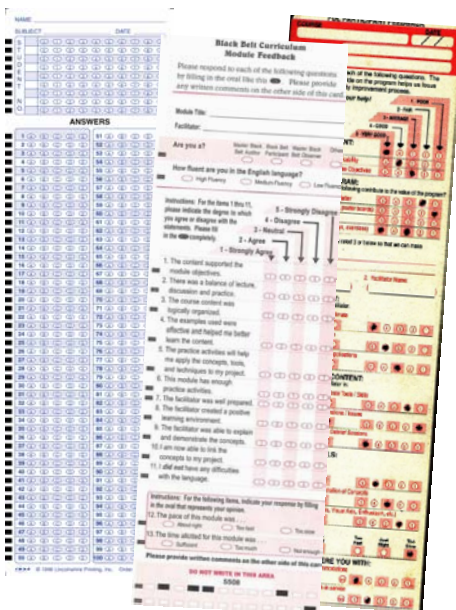
4 lbs (1.8kg) - Shipping Weight 6 lbs (2.7kg)

**Paper Weight:**

18 to 100 lb. Bond, ledger, index or OCR - .007 inch to .010 inch thick  
(.007" to .010")

### OMR-Forms

Forms design and printing is an integral part of developing and implementing a successful application. The Chatsworth Data OMR-2000 allows flexibility in forms design and construction.



Our design department is available to assist in developing custom forms or in recommending printers to assist you in design and production.

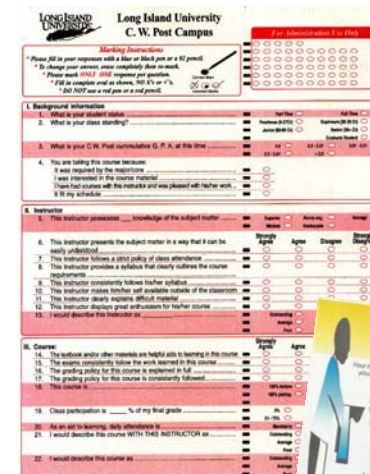
If you prefer to produce your own forms, a manual which contains complete specifications for design and production, is on a floppy disk supplied with the reader.

can be as simple as a

Design single cut card or as complex as a booklet with multiple double-sided forms.

Full-page forms are used by simply placing a microperf 3 1/4 inches from the right edge of the form leaving the left side of the form available for questions, instructions, etc.

Another common design places two perfs on a full sheet leaving a 2-inch tab on the left for logo, marking instructions, etc., resulting in two single or double sided cards per form increasing the amount of scannable area.



When the form has been completed, the scannable portion of the form is separated at the perforation and inserted into the OMR

If you application requires extensive text and responses, an 8 1/2 x 11-inch multiple page form, or booklet, can be used to administer the more complex surveys or

